



ORIGINAL INSTRUCTIONS

PRODUCT SPECIFICATIONS

Attention: Please choose proper power source, voltage and frequency that are shown in the label for your bandsaw.

BS200P		
Motor Power	300W	
Throat Width	200mm	
Cutting Capacity	85mm	
Cutting Speed	50Hz	980 m/min
	60Hz	1180m/min
Blade Size	1400 mm(Length) x 3-10mm(Width)	
Table size	300mm x 305mm	

SAFETY INSTRUCTIONS

WARNING: When using electric tools, basic safety precautions, including the following, should always be followed to reduce the risk of fire, electric shock and personal injury.

Read all these instructions before operating this product and save the instructions.

GENERAL SAFETY INSTRUCTIONS

1. Keep work area clean.

Cluttered areas and benches invite injuries.

2. Consider work area environment.

Do not use power tools in damp or wet locations. Keep work area well lit.

3. Guard against electric shock.

Avoid body contact with earthed or grounded surfaces (e.g. pipes, radiators, ranges, refrigerators).

4. Keep children away.

Do not let visitors touch the tool or extension cord. All visitors should be kept away from work area.

5. Store idle tool.

When not in use, tools should be stored in a dry, lockable place, out of reach of children.

6. Do not force the tool.

It will do the job better and safer at the rate for which it was intended.

7. Use the right tool.

Do not force small tools or attachments to do the job of a heavy duty tool. Do not use tools for purposes not intended; for example, do not use circular saws to cut tree limbs or logs.

8. Dress properly.

Do not wear loose clothing or jewelry, they can be caught in moving parts. Rubber gloves and non-skid footwear are recommended when working outdoors. Wear protective hair covering to contain long hair.

9. Use safety glasses and hearing protection.

Also use face or dust mask if the cutting operation is dusty.

10. Connect dust extraction equipment.

If devices are provided for the connection for dust extraction facilities, ensure these are connected and properly used.

11. Do not abuse the cord.

Never carry the tool by the cord or yank it to disconnect it from the socket, Keep the cord away from heat, oil and sharp edges.

12. Use a push stick.

Use a push stick to feed the workpieces. It is safer than using your hand.

13. Do not overreach.

Keep proper footing and balance at all times.

14. Maintain tools with care.

Keep cutting tools sharp and clean for better and safer performance. Follow instructions for lubrication and changing accessories. Inspect tool cord periodically and if damaged have it repaired by an authorised service facility. Inspect extension cords periodically and replace, if damaged. Keep handles dry, clean and free from oil and grease.

15. Disconnect tools.

When not in use, before servicing and changing accessories such as blades, bits and cutters, disconnect tools.

16. Remove adjusting keys and wrenches.

Form the habit of checking to see that keys and adjusting wrenches are removed from the tool before turning it on.

17. Avoid unintentional starting.

Do not carry a plugged-in tool with a finger on the switch. Ensure switch is off when plugging in.

18. Use outdoor extension leads.

When tool is used outdoors, use only extension cords intended for outdoor use.

19. Stay alert.

Watch what you are doing. Use common sense. Do not operate tool when you are tired.

20. Check damaged parts.

Before further use of tool, a guard or other part that is damaged should be carefully checked to determine that it will operate properly and perform its intended function. Check for alignment of moving parts, free running of moving parts, breakage of parts, mounting and any other conditions that may should be properly repaired or replaced by an authorised service center unless otherwise indicated in this instruction manual. Have defective switches replaced by an authorised service facility. Do not use the tool if the switch does not turn it on and off.

21. Warning.

The use of any accessory or attachment, other than those recommended in this instruction manual or the catalogue, ,may present a risk of personal injury.

22. Have your tool repaired by a qualified person.

This electric tool is in accordance with the relevant safety requirements, Repairs should only be carried out by qualified persons using original spare parts, otherwise this may result in considerable danger to the user.

ADDITIONAL SAFETY RULES FOR TOOL

SAVE THESE INSTRUCTIONS

- 1. Wear eye protection.**
- 2. Do not use the tool around flammable liquids or gases.**
- 3. Always use face or dust mask.**
- 4. Check the blade carefully for cracks or damage before operation. Replace cracked or damaged blade immediately.**
- 5. Use only saw blades recommended by the manufacturer.**
- 6. Always use accessories recommended in this manual.**
- 7. Use of improper accessories such as abrasive cut-off wheels may cause injury.**
- 8. Select the correct saw blade for the material to be cut.**

8. Do not use saw blades manufactured from high speed steel.
9. To reduce the emitted noise, always make sure that the blade is sharp and clean.
10. Do not cut metals such as nails and screws. Inspect for and remove all nails, screws and other foreign matter from the workpiece before operation.
11. Remove wrenches, cut-off pieces, etc., from the table before the switch is turned on.
12. Keep hands out of the line of the saw blade.
13. Never stand or permit anyone else to stand in line with the path of the saw blade.
14. Before using the tool on an actual workpiece, let it run for a while. Watch for vibration or wobbling that could indicate poor installation or a poorly balanced blade.
15. Replace the table insert when worn.
16. Connect the bandsaw to a dust-collecting device when sawing wood.
17. Do not operate the machine when the door or guard protecting the bandsaw is open.
18. Take care that the selection of the bandsaw and the speed depends on the material to be cut.
19. Do not clean the bandsaw whilst it is in motion.

ELECTRICAL REQUIREMENTS

POWER SUPPLY AND MOTOR SPECIFICATIONS

WARNING: To avoid electrical hazards, fire hazards, or damage to the tool, use proper circuit protection. Use a separate electrical circuit for your tools. To avoid shock or fire, if power cord is worn or cut, or damaged in any way, have it replaced immediately.

GROUNDING INSTRUCTIONS

WARNING: This tool must be grounded while in use to protect the operator from electrical shock.

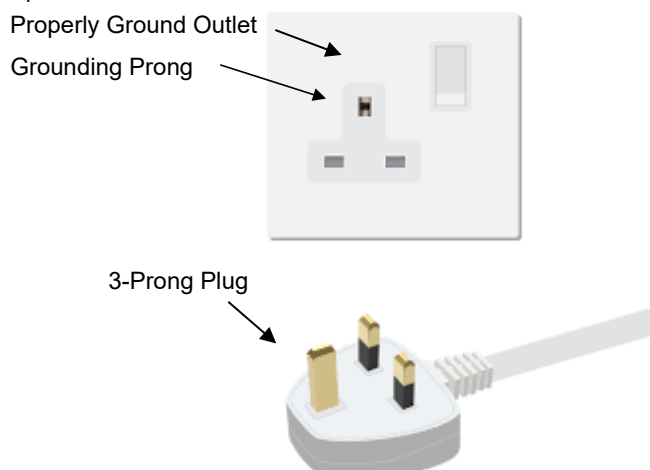
IN THE EVENT OF A MALFUNCTION OR BREAKDOWN, grounding provides a path of least resistance for electric current and reduces the risk of electric shock. This tool is equipped with an electric cord that has an equipment grounding conductor and a grounding plug. The plug **MUST** be plugged into a matching receptacle that is properly installed and grounded in accordance with ALL local codes and ordinances.

DO NOT MODIFY THE PLUG PROVIDED. If it will not fit the socket, have the proper socket installed by a qualified electrician.

IMPROPER CONNECTION of the equipment-grounding conductor can result in risk of electric shock. The conductor with green insulation (with or without yellow stripes) is the equipment-grounding conductor. If repair or replacement of the electric cord or plug is necessary, **DO NOT** connect the equipment-grounding conductor to a live terminal.

CHECK with a qualified electrician or service person if you do not completely understand the grounding instructions, or if you are not sure the tool is properly grounded.

Refer to either picture:



GUIDELINES FOR EXTENSION CORDS

USE PROPER EXTENSION CORD. Make sure your extension cord is in good condition. When using an extension cord, be sure to use one heavy enough to carry the current your product will draw. An undersized cord will cause a drop in line voltage, resulting in loss of power and cause overheating.

Be sure your extension cord is properly wired and in good condition. Always replace a damaged extension cord or have it repaired by a qualified person before using it. Protect your extension cords from sharp objects, excessive heat and damp or wet areas.

ACCESSORIES AND ATTACHMENTS

RECOMMENDED ACCESSORIES

WARNING: To avoid injury:

- Use only accessories recommended for this bandsaw.
- Follow instructions that accompany accessories. Use of improper accessories may cause hazards.
- Use only accessories designed for this bandsaw to avoid injury from thrown broken parts or workpieces.
- Do not use any accessory unless you have completely read the instruction or operator's manual for that accessory.

CARTON CONTENTS

UNPACKING AND CHECKING CONTENTS

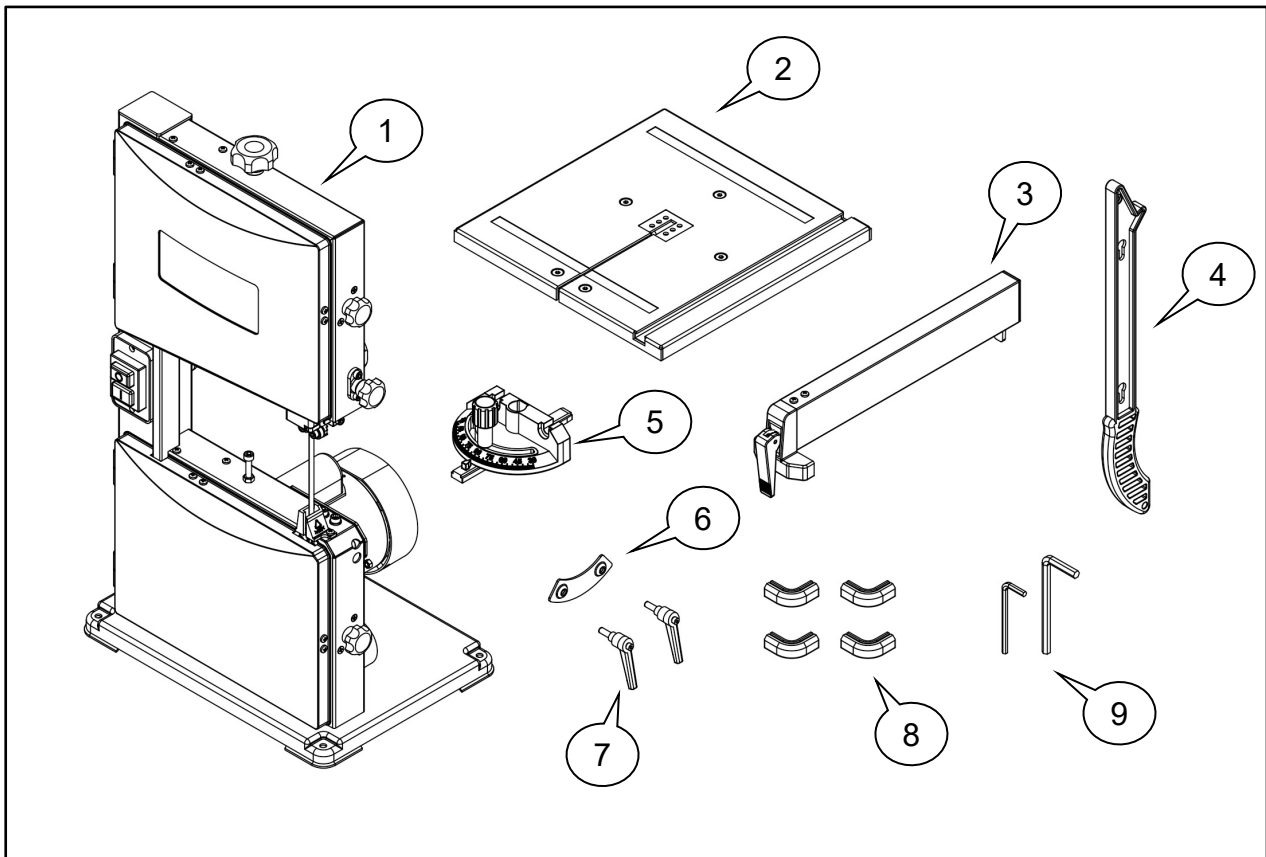
Carefully unpack the bandsaw and all its parts, and compare against the illustration following.

WARNING:

- To avoid injury from unexpected starting, do not plug the power cord into a power source receptacle during unpacking and assembly. This cord must remain unplugged whenever you are assembling or adjusting the bandsaw.
- If any part is missing or damaged, do not plug the bandsaw in until the missing or damaged part is replaced, and assembly is complete.

TABLE OF LOOSE PARTS

Unpack carton; check your machine to see parts listed below:

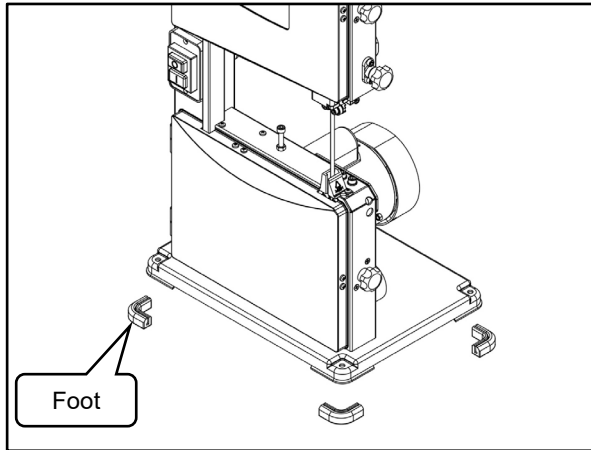


1. Bandsaw	1pc
2. Table assembly	1pc
3. Fence	1pc
4. Push stick	1pc
5. Mitre gauge	1pc
6. Clamp plate	1pc
7. Lock handle	2pcs
8. Feet	4pcs
9. Hex wrench (3mm, 4mm)	2pcs

INSTALLATION

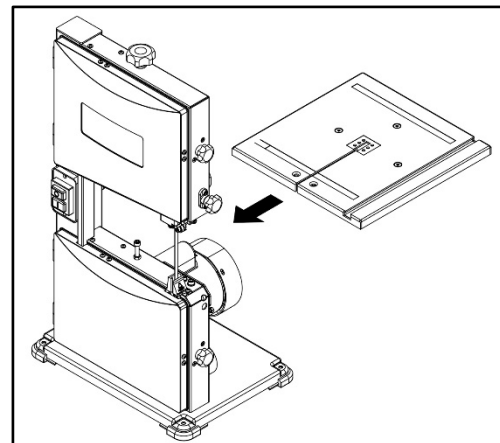
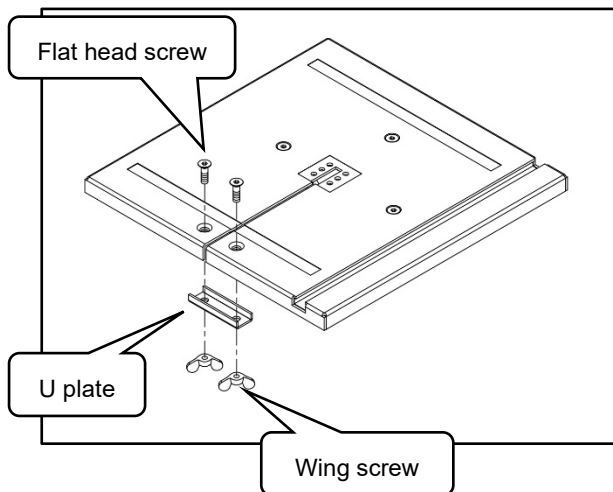
1. Attach the foot to bandsaw

- Attach four feet to the corners of bandsaw base.
- Place the bandsaw on a workbench for next assembly.

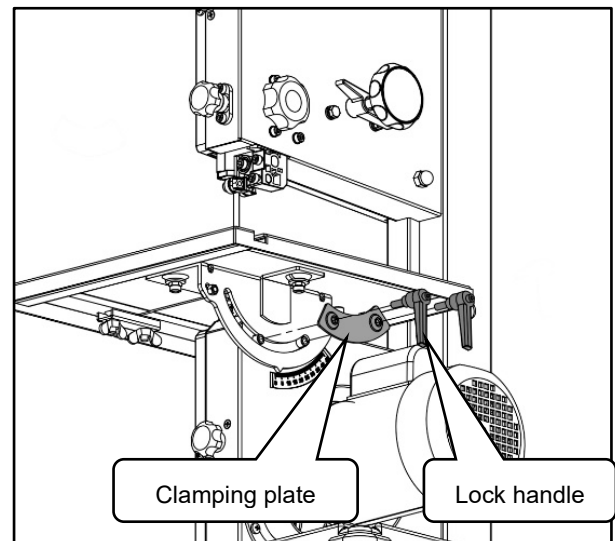


2. Mounting table assembly

- Remove the two flat head screws, U plate and wing nuts on the saw table.
- Slide the saw table past the blade and through the slot moving to the frame.



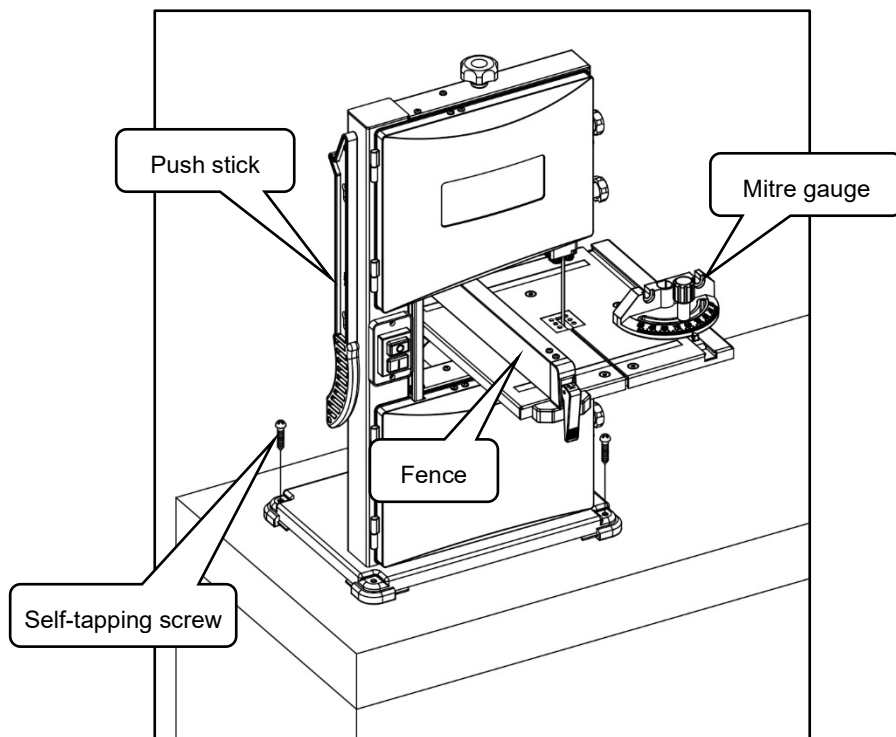
- Fit the two pins on the frame into the slots of the saw table bracket.
- Assemble the clamping plate and lock handle. Tighten the saw table to the saw frame by turning the two lock handles clockwise.
- Attach the removed flat head screws, U plate, and wing nuts to the saw table.



3. Fix the bandsaw to a workbench by using four self-tapping screws (not provided).

Place the fence and mitre gauge onto the table.

Place push stick onto the screw fixed side of the bandsaw frame.

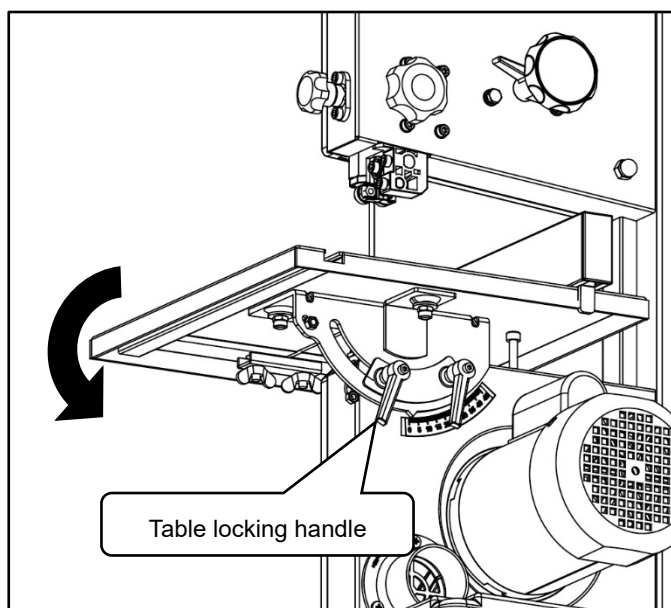


ADJUSTING

WARNING: Always be sure that the tool is switched off and unplugged before any adjustments.

1. Tilting table

- Loosen the two table lock handles slightly. Tilt the saw table until it reaches the desired angle.
- Using the scale indicator, check angle markings.
- Retighten the two table lock handles to hold saw table securely in place.



2. Aligning the saw blade

If the saw blade does not run in the center of the rubber tyre, the tracking needs to be corrected by adjusting the tilt of the upper bandsaw wheel.

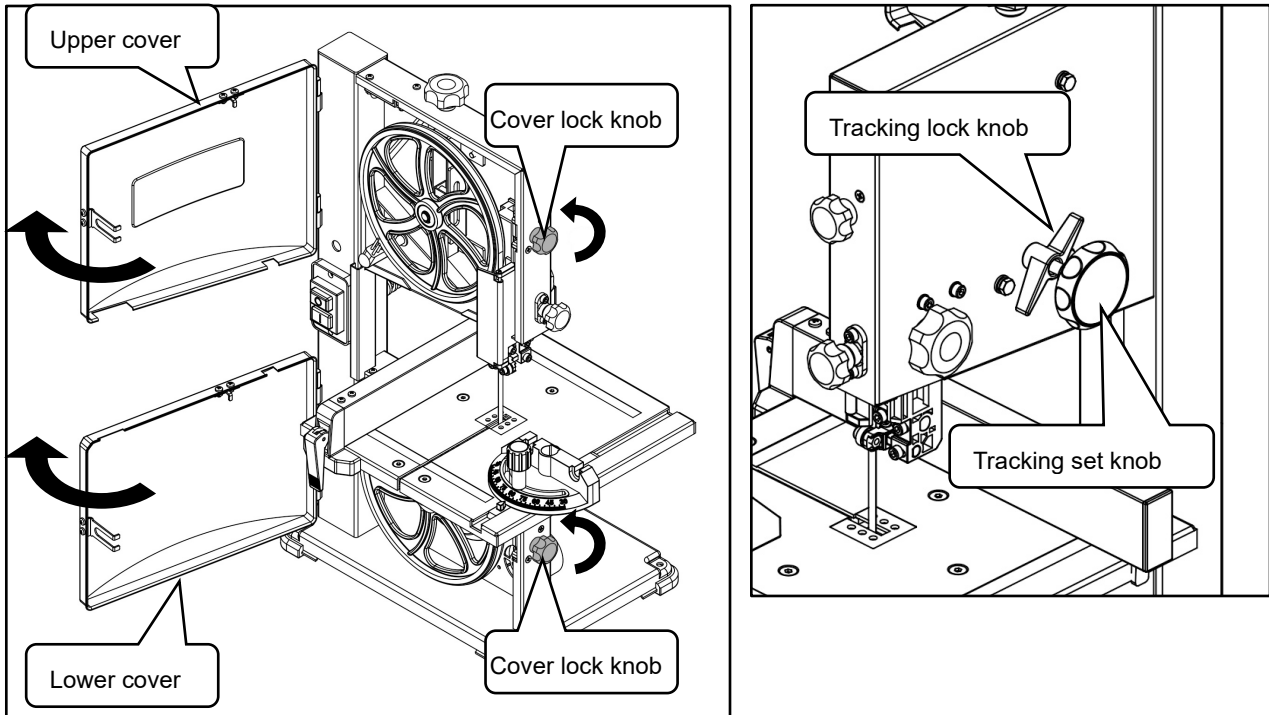
Turn the cover locking knob counterclockwise until its end position, open the upper and lower cover.

Loosen the tracking lock knob, manually rotate the upper wheel, taking care not to touch the blade.

Turn setting knob clockwise or anticlockwise until the saw blade tracks centered on the rubber tyre.

After adjusting, re-tighten the tracking lock knob.

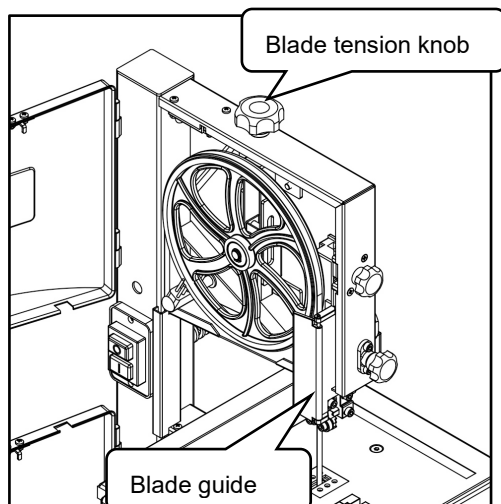
Close the cover and turn the cover locking knob clockwise until the cover is locked.



3. Adjusting the blade tension

Warning: Too much tension can cause the bandsaw blade to break. Too little tension can cause the driven bandsaw wheel to slip and the saw blade to stop.

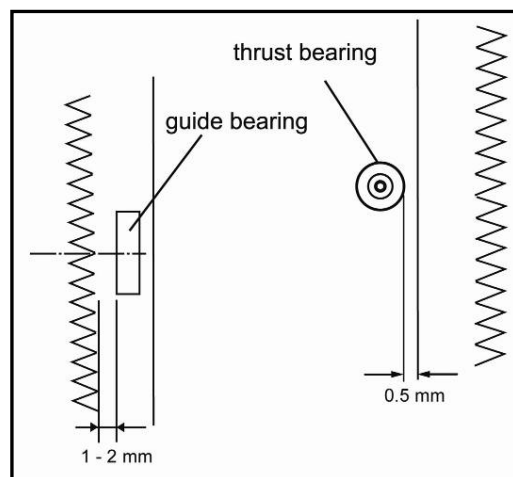
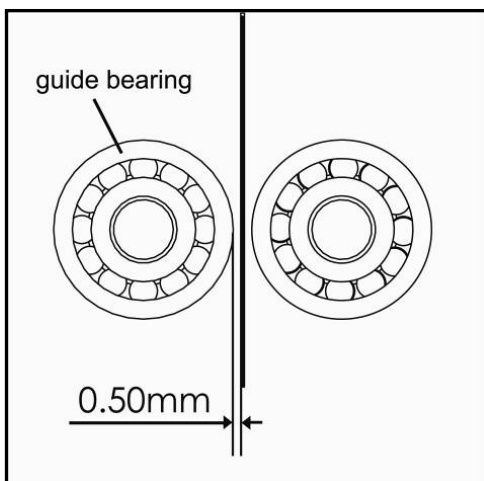
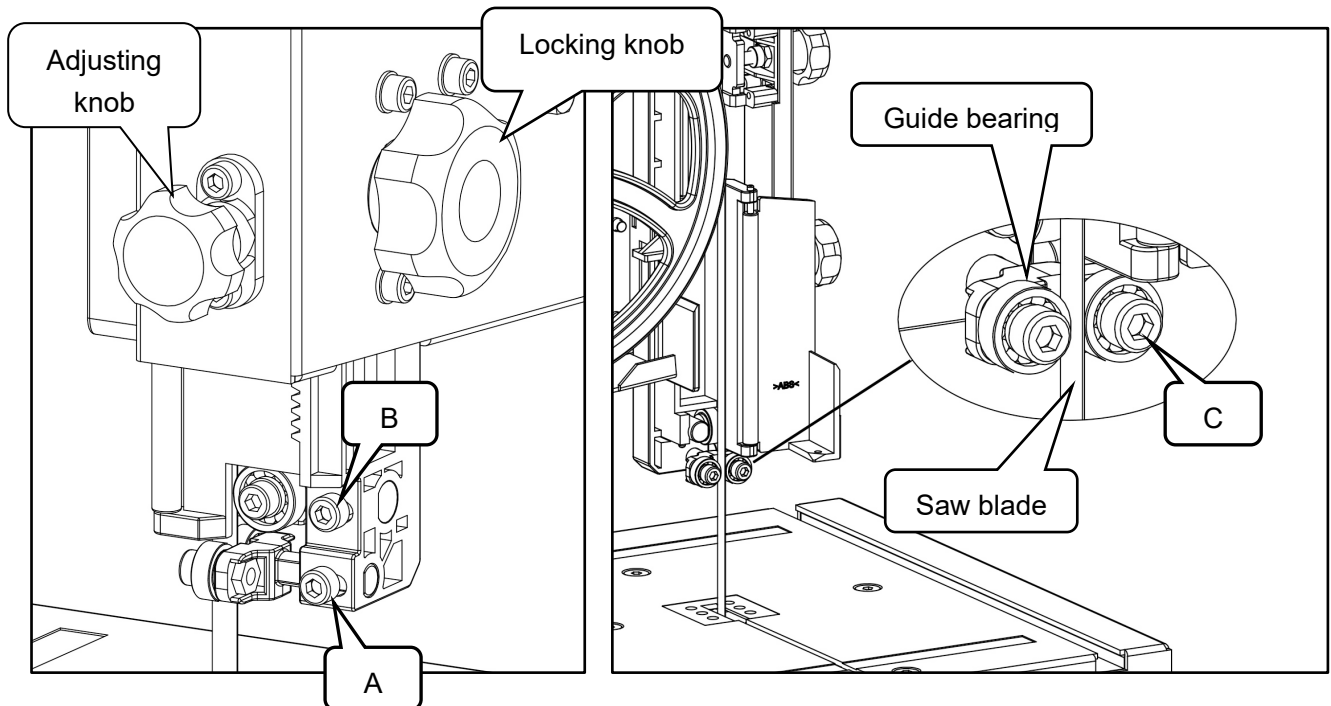
- Raise upper blade guide fully. Turn the knob to adjust tension.
- Check tension by pushing with a finger, halfway between table and upper guide, against the side blade (the blade should flex not more than 2mm)
- Turning the setting knob clockwise increases, the blade tension
- Tuning the setting knob counter-clockwise reduces, the blade tension.



4. Upper blade guide adjustment

The height of blade guide needs to be adjusted: prior to every cutting/operation, to accommodate the height of work piece (the upper blade guide should be set approx. 3mm above the workpiece).

- Set upper blade guide with the adjusting knob to the desired height by loosening the locking knob. After adjustment, be sure to tighten the lock knob.
- Loosen the screw (A), and adjust guide bearing position, so that the guide bearing is positioned 1 or 2mm from teeth of blade. Retighten the screw (A).
- Loosen the screw (B), and adjust thrust bearing to a position of 0.5mm from rear of blade. Retighten the screw(B).
- Loosen the socket head screw (C), and adjust guide bearing to a position 0.5mm away from blade. Retighten the socket head screw (C).

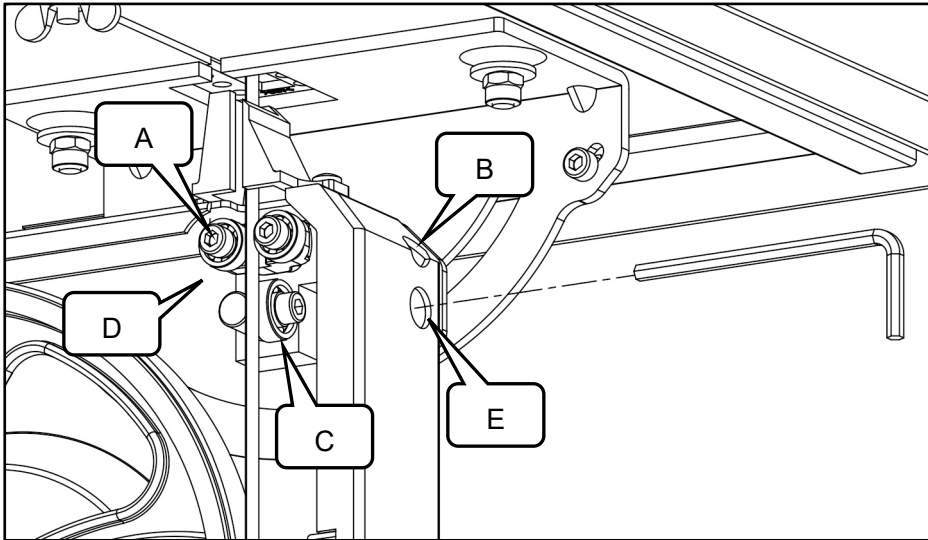


5. Align the lower blade guide

The lower blade guide needs to be readjusted after every bandsaw blade change or tracking adjustment.

- Through the hole (B) and (E), use a hex wrench to loosen socket bolts, adjust guide block (D) and thrust bearing (C) just like adjusting upper blade guide.
- Loosen the screw (A), and adjust the guide bearing to a position 0.5mm away from blade. Re-tighten the screw

(A).



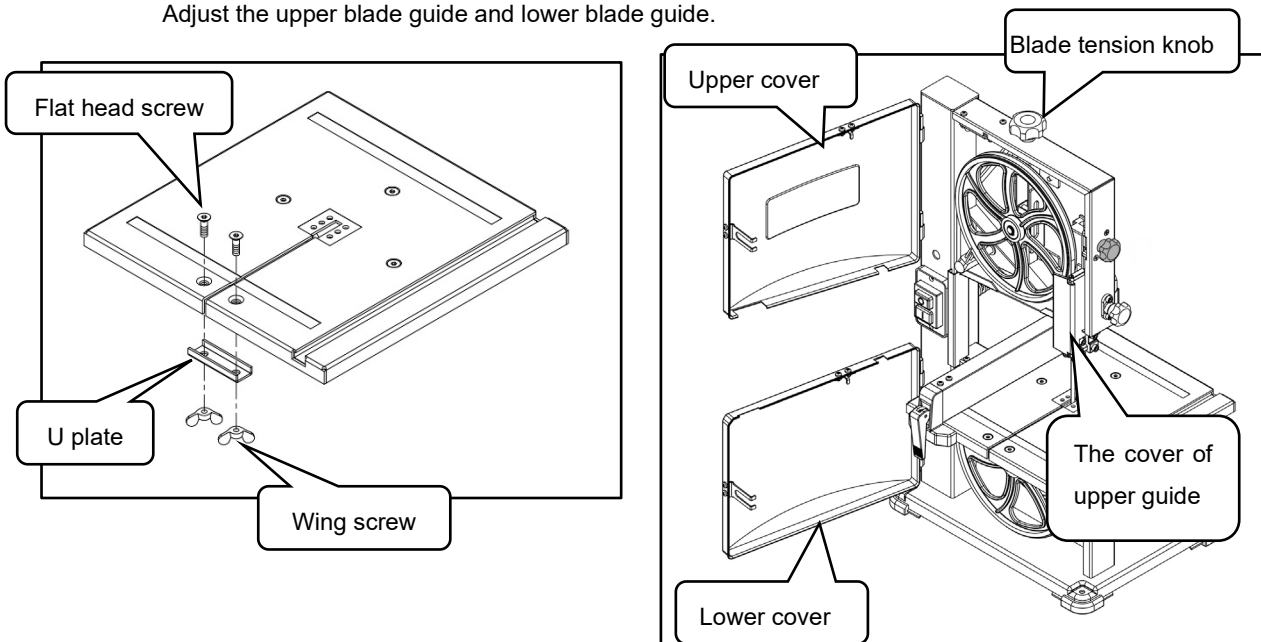
6. Changing the bandsaw blade.

Warning: Saw blade is dangerous. Be sure to wear gloves when handling the saw blade in situations such as removing from packaging, mounting or replacing blade.

- Remove the two flat head screws, U plate and wing nuts on the saw table.
- Turn the cover locking knob counterclockwise until its end position, open the upper and lower cover.
- Set the upper blade guide to its lowest position.
- Open the cover of upper guide assembly.
- Loosen blade tension knob.
- Remove the bandsaw blade from the machine.
- Fit a fresh bandsaw blade and center band saw blade on the rubber tyres of the bandsaw wheels.
- Re-tighten blade tension knob.
- Replaced the two flat head screws, U plate and wing nuts.
- Close the cover of upper guide assembly.
- Close the cover and turn the cover locking knob clockwise until the cover is locked.
- Then: Align the saw blade.

Adjust the blade tension.

Adjust the upper blade guide and lower blade guide.



OPERATIONS

Warning: to reduce the risk of personal injury, the following safety recommendations should be observed when operating the saw.

- Do not touch the saw blade when cutting.
- During saw operation, wear safety glasses, but do not wear gloves.
- Do not jam any workpieces.
- Do not try to slow the bandsaw blade down or stop it by pushing the workpiece against the saw blade from the side.
- When straight cutting against the fence use a push stick.
- Using work support when cutting long stock, this would otherwise fall off the table on completion of cut.
- Ideally use a dust collector.
- When cutting round stock, firmly secure it.
- Before starting work, check saw blade, upper and lower blade guard are in proper working order.
- Replace damaged parts immediately.
- Assume correct work position (the bandsaw blade's teeth must point towards the operator).
- Be careful of the risk of kickback.

1. Switch action

To start the bandsaw, turn on the switch.

To stop the bandsaw, turn off the switch.

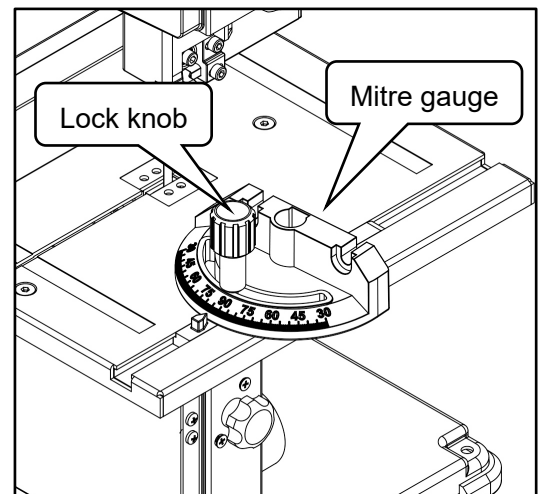
2. Using mitre gauge

The mitre gauge is inserted into the table slot from the table front edge.

For mitre cuts, the mitre gauge can be turned to 60° in both directions.

To set a mitre angle: loosen lock knob by turning it counter-clockwise.

Warning: When cutting with mitre gauge, the lock handle must be firmly tightened.

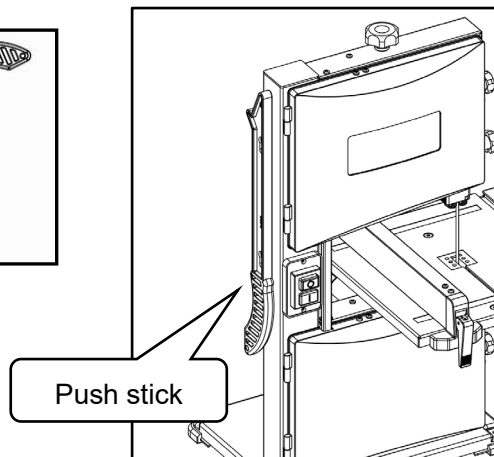
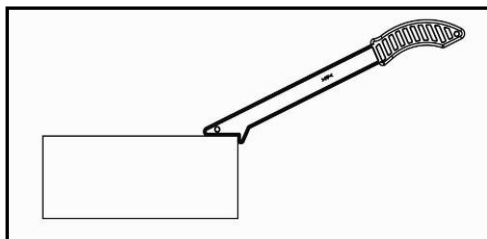


3. Using push stick

The push stick serves as an extension of the hand and protects against accidental contact with saw blade.

When the push stick is not used, it can be stored on the hook provided at the bandsaw frame.

Replace push stick if damaged.

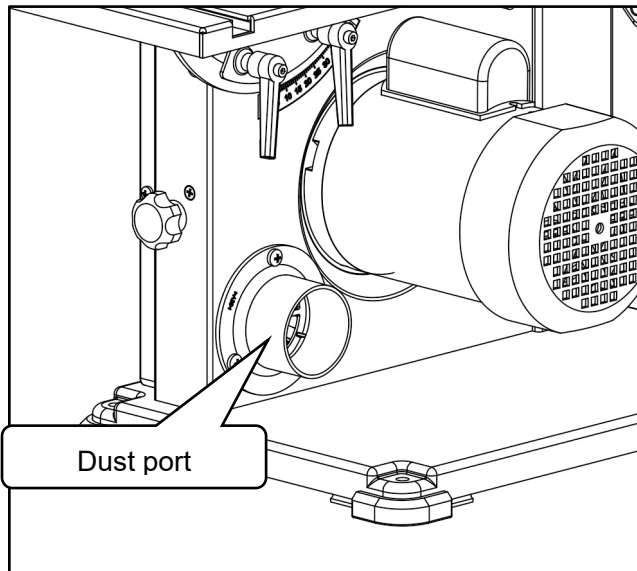


4. Sawing

- Set upper blade guide 3mm above the workpiece.
- Place workpiece on the table.
- Plug in.
- Start saw.
- Cut workpiece in a single pass.
- Switch off if no further cutting is to be done immediately afterwards.

5. Connecting to dust collector

The bandsaw provides a dust port. It should be connected with a dust collector when sawing wood.



MAINTENANCE

Warning! Always be sure the tool is switched off and disconnected the plug from the power supply before inspection and maintenance

● FREQUENT INSPECTION

The bandsaw should be inspected frequently.

The cord, in-lead, plug and switch should be inspected to check that it is in good condition.

Whether there is any damage on the drive part.

● Cleaning

Clean out sawdust and chips from time to time. Carefully clean the blade guard and moving parts inside the bandsaw.

● LUBRICATION

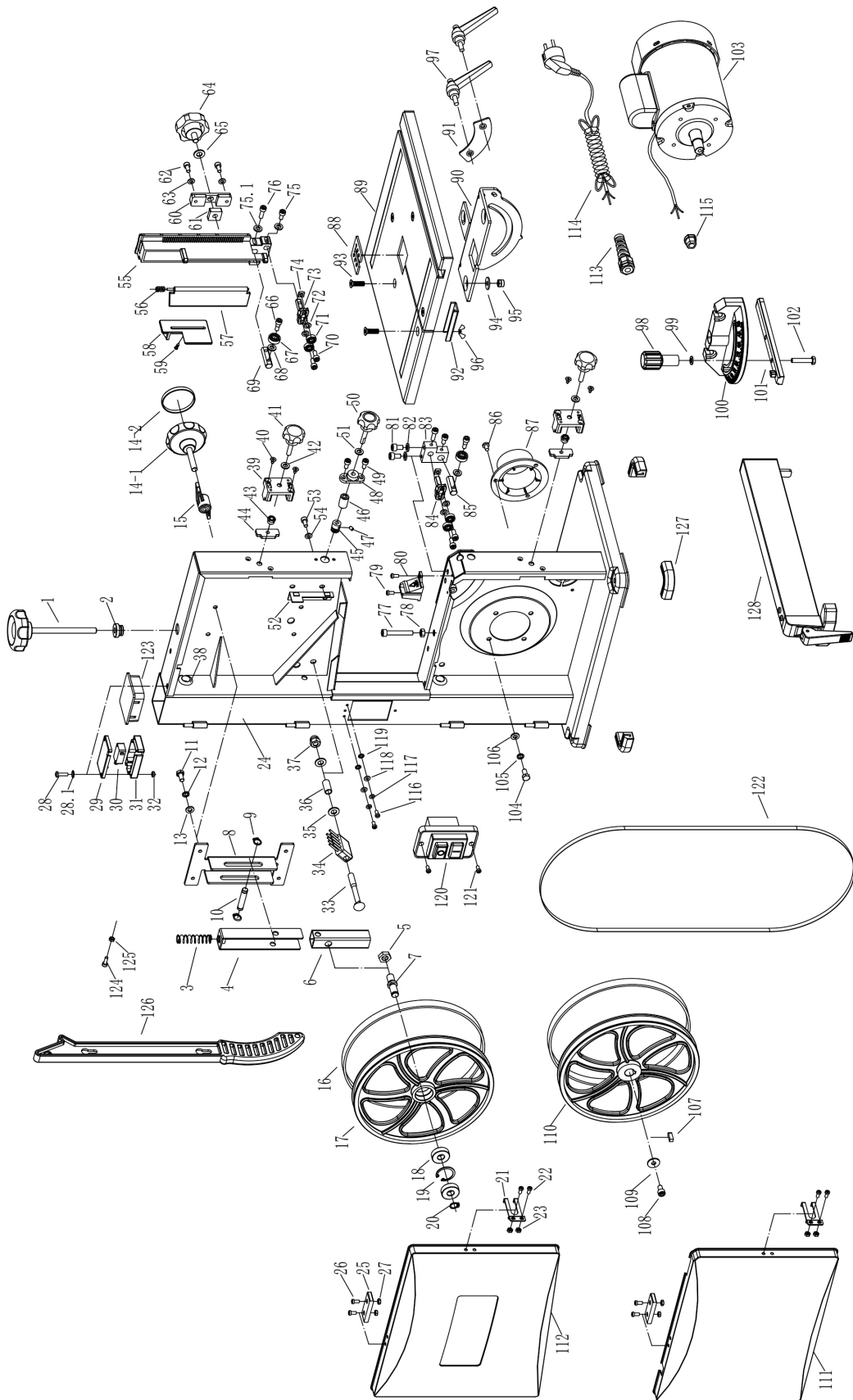
To keep the bandsaw in tip-top running condition, and to assure maximum service life, oil or grease the moving parts and rotating parts from time to time.

To reduce the emitted noise, always be sure that the blade is sharp and clean.

● KEEP IN STORAGE

The bandsaw should be kept at dry clean and non-corrosive environment.

Assembly Diagram



No.	Description	QTY.
1	Blade tension knob	1
2	Bushing	1
3	Spring	1
4	Pulling plate	1
5	M10 Hex nut	1
6	Bevel support block	1
7	Upper wheel shaft	1
8	Support bracket	1
9	8mm Retaining ring	2
10	Shaft	1
11	M6X12 Hex head bolt	4
12	6mm Lock washer	4
13	6mm Flat washer	4
14-1	Tracking set knob	1
14-2	Knob cover	1
15	Tracking lock knob	1
16	Tyre	2
17	Upper wheel	1
18	Ball bearing 6000-2RS	2
19	26mm Internal retaining ring	1
20	10mm Retaining ring	1
21	Cover connecting plate	2
22	M4X8 Pan head screw	4
23	M4 hex nut	4
24	Frame	1
25	Micro switch key	2
26	M4X8 Pan head screw	4
27	M4 Hex nut	4
28	M4X20 Pan head screw	4
28.1	4mm Flat washer	4
29	Micro switch cover	2
30	Micro switch	2
31	Micro switch box	2
32	M4 Hex nut	4
33	M8X65 Carriage bolt	2
34	Brush	2
35	8mm Flat washer	4
36	Bushing	2
37	M8 Acorn nut	2
38	Rubber bushing	2

No.	Description	QTY.
39	Cover locking bracket	2
40	Self threading screw	4
41	Cover locking knob	2
42	6mm Flat washer	2
43	M6 Lock nut	2
44	Locking plate	2
45	Pinion	1
46	Bushing	1
47	M4X6 Set screw	1
48	Pinion support bracket	1
49	M5X10 Socket head screw	2
50	Adjusting knob	1
51	6mm Flat washer	1
52	Guiding plate	1
53	M5X10 Socket head screw	2
54	5mm Flat washer	2
55	Up guide base	1
56	Spring	1
57	Front cover	1
58	Side cover	1
59	Self threading screw	1
60	Guide block	1
61	Square nut	1
62	M5X10 Socket head screw	2
63	5mm Flat washer	2
64	Up guide lock knob	1
65	8mm Flat washer	1
66	Screw	2
67	Ball bearing 606-2RS	2
68	5mm Flat washer	2
69	Shaft	1
70	M5X14 Socket head screw	4
71	Ball bearing 605-2RS	4
72	5mm Flat washer	4
73	Bearing support block	1
74	Square nut	4
75	M5X10 Socket head screw	2
75.1	5mm Flat washer	2
76	M5X16 Socket head screw	2
77	M6X35 Socket head screw	1

No.	Description	QTY.
78	M6 Hex nut	1
79	M4X8 Pan head screw	2
80	Lower guard	1
81	M6X8 Socket head screw	2
82	6mm Flat washer	2
83	Lower guide base	1
84	Bearing support block	1
85	Shaft	1
86	M5X8 Pan head screw	3
87	Dust port	1
88	Table insert	1
89	Table	1
90	Table support bracket	1
91	Clamping plate	1
92	U plate	1
93	M6X20 Flat head screw	5
94	6mm Flat washer	3
95	M6 Lock nut	3
96	M6 Wing nut	2
97	Locking handle	2
98	Knob	1
99	6mm Flat washer	1
100	Mitre gauge	1
101	Sliding bar	1
102	M6X30 Hex head bolt	1
103	Motor	1
104	M6X12 hex head bolt	4

No.	Description	QTY.
105	6mm Lock washer	4
106	6mm Flat washer	4
107	5X5X15mm Key	1
108	Left threading screw	1
109	6mm Flat washer	1
110	Lower wheel	1
111	Lower cover	1
112	Upper cover	1
113	Strain relief	1
114	Power cord	1
115	Bushing	1
116	M4X8 Pan head screw	2
117	4mm Lock washer	2
118	4mm Flat washer	2
119	4mm Serrated washer	2
120	Switch	1
121	M4X8 Pan head screw	2
122	Saw blade	1
123	Top cover	1
124	M4X20 Pan head screw	1
125	M4 Hex nut	1
126	Push stick	1
127	Foot	4
128	Fence	1

We the Importer:

TOOLSAVE LTD

Unit C, Manders Ind. Est.,
Old Heath Road, Wolverhampton,
WV1 2RP.

Declare that the product:

Designation: 8" Professional Bandsaw

Model: BS200P

Standards & technical specifications referred to:

**EN 61029-1:2009+A11 EN
61029-2-5:2011+A11**

Authorised Technical File Holder:

Bill Evans

24/04/2024

The Director

